

[from Stations]

From Shinagawa Station

5 minutes by Free Shuttle Bus from both JR & Keikyū Line Shinagawa Station, Takanawa Exit or 10 minutes walk to the hotel.

From Kita-Shinagawa Station

Approximately 5 minutes walk from Keikyū Line Kita-Shinagawa Station.

[from Airports]

From Haneda Airport

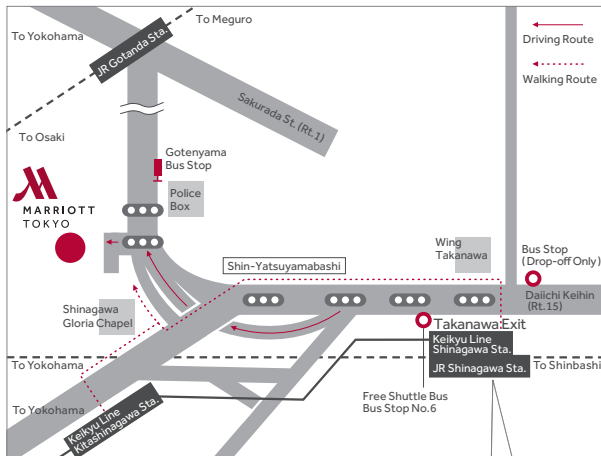
Approximately 30 minutes by Airport Limousine Bus or 20 minutes by Keikyū Line.

From Narita Airport

Approximately 100 minutes by Airport Limousine Bus.

TOKYO MARRIOTT HOTEL

4-7-36 Kitashinagawa,
Shinagawa-ku, Tokyo 140-0001 Japan
T: +81.3.5488.3911



- (A) Free Shuttle Bus Bus Stop No.6
- (B) Free Shuttle Bus (Drop-Off Only)



